

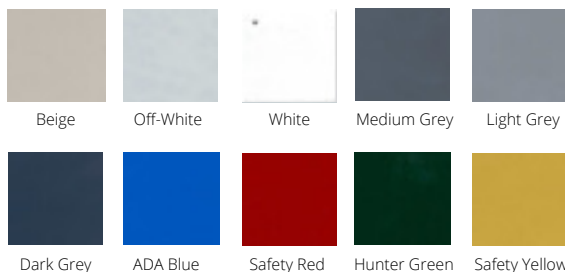
POLYSTYLE ESD™

RELIABLE ESD PROTECTION

Designed for industrial and production areas, warehouses, and high-traffic aisles.

PolyStyle ESD™ is a multi-layer flooring system consisting of a primer/barrier coat, a conductive ground-plane coat, and a highly durable polyurethane ESD/color coat. This three-part system provides a highly reliable ESD floor system that ensures compliance with strict ESD standards like **ANSI/ESD S20.20**, with consistent system resistance and low body voltage generation.

Available in a Variety of Colors



KEY BENEFITS

- Most consistent ESD properties on the market with state-of-the-art ESD additives guaranteed to disperse evenly
- Polyurethane top coat provides exceptional durability, toughness, and scratch resistance
- Withstands high-moisture concrete
- Excellent stain resistance
- High point load resistance
- Easy installation

RECOMMENDED FOR

- Electronics manufacturing areas
- Sensitive product storage areas
- Transport aisles
- Shipping and receiving areas
- Aircraft hangers
- Explosives areas

RELIABLE ESD PROTECTION

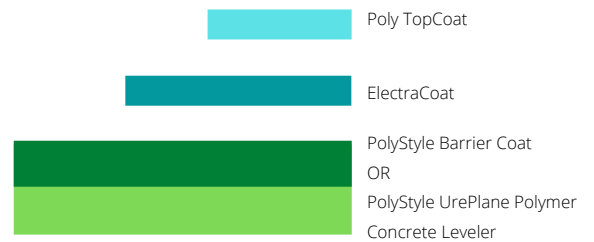
Available in 4 configurations:

	<u>PolyStyle Dissipative</u>	<u>PolyStyle Dissipative High Build</u>	<u>PolyStyle Conductive</u>	<u>PolyStyle Conductive High Build</u>
Top Coat	PolyStyle Poly TopCoat	PolyStyle Poly TopCoat	PolyStyle Poly TopCoat	PolyStyle Poly TopCoat
Conductive Layer	N/A	N/A	PolyStyle ElectraCoat	PolyStyle ElectraCoat
Barrier Coat	PolyStyle Barrier Coat	PolyStyle Barrier Coat	PolyStyle Barrier Coat	N/A
High Build Base Coat	N/A	PolyStyle Ureplane Polymer Concrete Leveler	N/A	PolyStyle Ureplane Polymer Concrete Leveler
Total Thickness	20 mil	1/8", 3/16", or 1/4"	26 mil	1/8", 3/16", or 1/4"

SIMPLE INSTALLATION & MAINTENANCE

No wax required

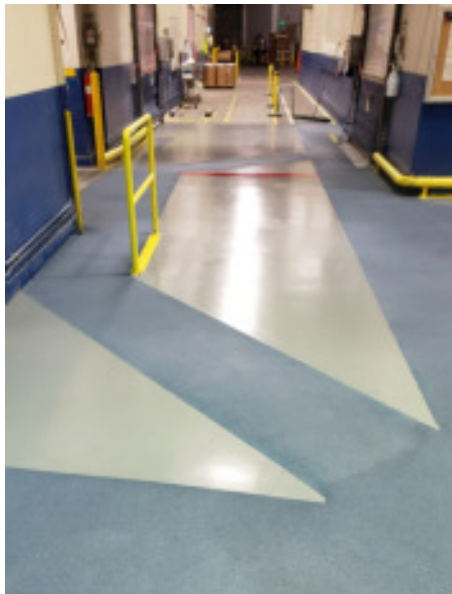
Each resinous system is easy to install and easy to clean - essential in static-sensitive spaces where dust and debris cannot be tolerated. For general cleaning, use a pH-neutral product. The durable polyurethane ESD top layer contains state-of-the-art conductive additives that last the life of the floor and never need wax to rejuvenate the finish or the ESD properties.



PolyStyle ESD must be applied by an authorized StaticStop Installer and is only sold as a turn-key, installed system. Concrete should be tested for moisture emissions prior to installation. Surface should be shot blast or ground to provide an ICRI profile of SCP3 or greater and all dust must be removed.

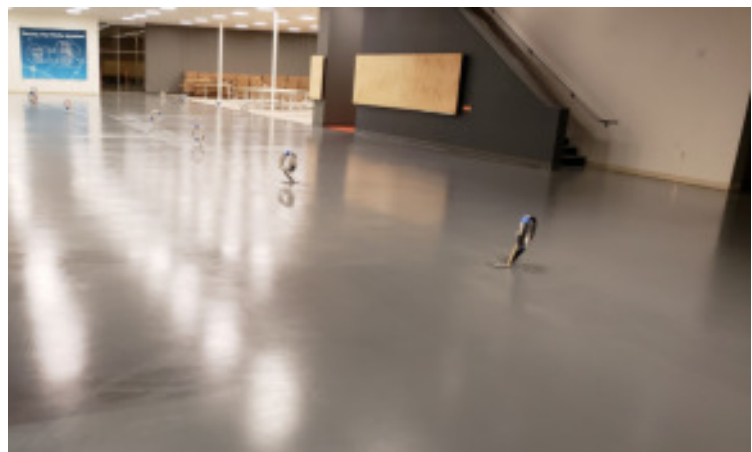


POLYSTYLE ESD PROTECTS



From airplane hangers and explosives areas, to sensitive product storage and transport aisles, PolyStyle ESD is an easy and reliable solution that goes down quickly and ensures total ESD protection.

Take a look at how large manufacturing companies are using PolyStyle ESD to protect their vulnerable environments.



PROPERTIES

Electrical Properties

	CONDUCTIVE	DISSIPATIVE
Resistance per ANSI/ESD 7.1	2.5x10 ⁴ to <1.0x10 ⁶ Ohms	1.0x10 ⁶ to <1.0x10 ⁹ Ohms
Body Voltage per ANSI/ESD 97.2	<50 volts	<100 volts
ANSI/ESD S20.20	Complies	Complies

Physical Properties

Abraision Resistance per ASTM D4060
Poly TopCoat: 7mg

Impact Resistance per ASTM D2794
Ureplane Polymer Concrete Leveler: 160 in-lbs.
Barrier Coat: 120 in-lbs.

Hardness (Konig) per ASTM D4366
Poly TopCoat: 150

Adhesion Strength per ASTM D4541
Barrier Coat: 400psi, concrete failure
Ureplane Polymer Concrete Leveler: >500 psi, concrete failure

LEED v4: Low Emitting Materials
Complies, CDPH/EHLB Std Method V1.2

Maximum Moisture Levels for Concrete Substrate
Moisture Vapor Emission Rate per ASTM F1869: <25 lbs.
Relative Humidity per ASTM F2170: <99%

Coefficient of Friction - Dry per ASTM D2047
Poly TopCoat with Anti-Slip: 0.7

Coefficient of Friction - Wet per ASTM D2047
Poly TopCoat with Anti-Slip: 0.6

Chemical Resistance

ASTM D 1308, 24 Hour

Urine	No Effect
Blood	No Effect
Whiskey	No Effect
Black Ink	No Effect
Brake Fluid	No Effect
Gasoline	No Effect
Skydrol 500B-4	No Effect
Hydraulic Fluid 83282	No Effect
Mineral Spirits	No Effect
Xylene	No Effect
MEK	Softened
50% Sodium Hydroxide Solution	No Effect
25% Hydrochloric Acid	No Effect
25% Sulfuric Acid	No Effect
25% Acetic Acid	No Effect
25% Nitric Acid	Blistered