

Ground Floor™ Glue-Down Vinyl

GroundFloor™ glue-down ESD vinyl provides lasting ESD protection with lifetime electrical properties.

GroundFloor™ is a low-cost, reliable, and attractive alternative for your static-protection needs. This direct glue-down option is a perfect alternative to our **FreeStyle ESD™** interlocking floor when installing in open spaces, where downtime isn't a concern and where subfloors are ready to accept glue-down flooring.

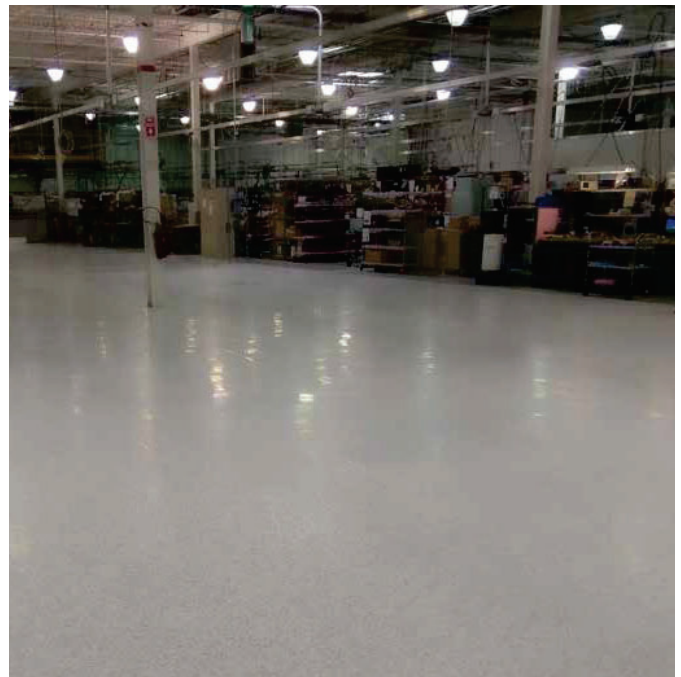
GroundFloor™ glue-down vinyl flooring complies with the requirements of ESD S20.20.

GroundFloor™ glue-down vinyl comes in a variety of colors and formulations to suite your specific needs for ESD protection, physical performance and aesthetics.

All **GroundFloor™** products have “built in” ESD control and comply with the requirements of ESD S20.20

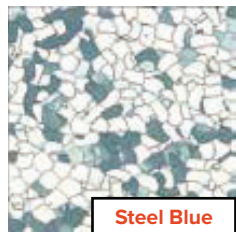
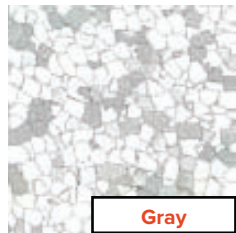
- **GroundFloor™ Classic** - Great value, high performance ESD tile at low cost
- **GroundFloor™ Plus** - High performance ESD tile, looks great, low maintenance polyurethane coating
- **GroundFloor™ Designer Series** – ESD control with the designer's eye in mind.

For areas that do have subfloor problems, such as high moisture, or where downtime will be overly disruptive to your operations, our **FreeStyle ESD™** and **SelectTile ESD™** interlocking tiles are a great alternative.



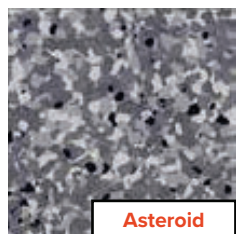
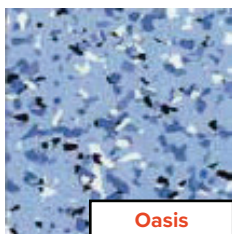
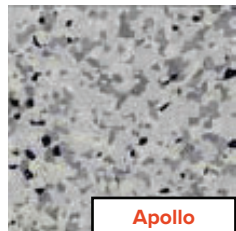
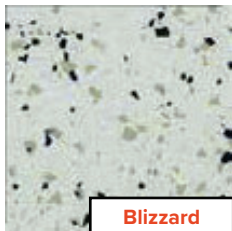
GroundFloor™ Classic

GroundFloor™ Classic is constructed with a rugged, dense polymer formulation, with “top to bottom” conductive veins providing permanent and guaranteed lifetime conductivity. No topical coatings are required to guarantee.



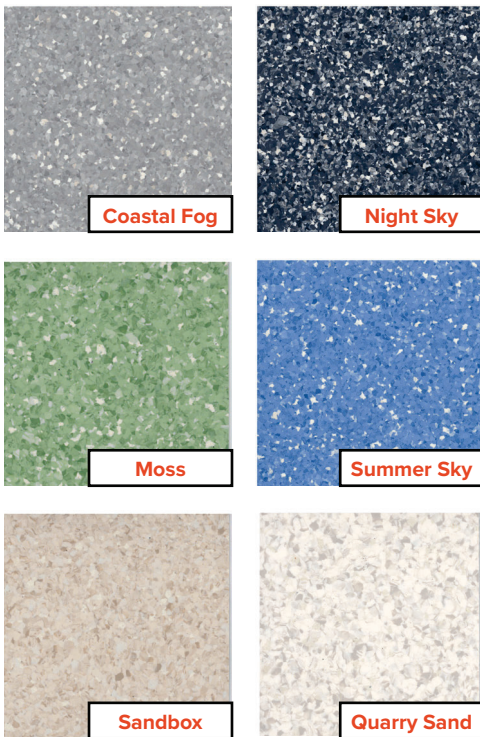
GroundFloor™ Plus

GroundFloor™ PLUS offers the same high level ESD performance as **classic**. This construction relies upon conductive chips throughout the tiles to guarantee lifetime electrical performance while allowing a wider range of colors. “Plus”, **GroundFloor™ Plus** has an advanced top surface that has a tighter polymer structure that makes it easier to keep clean.



GroundFloor™ Designer Series

GroundFloor™ Designer Series offers static control with the Designer's eye in mind. No carbon chips or veins are required for ESD performance. This allows ESD protection that will blend with any work environment, yielding balance and symmetry.



Designate your ESD Protected Area with our ESD EPA logo tile. The image of this tile is built into the entire thickness of the tile, so it won't peel off and will last the life of the tile.

Limited 10-Year Warranty

All GroundFloor™ products are backed by a lifetime electrical warranty and a 10-year limited wear warranty. For full warranties for each product line visit www.StaticStop.com to view and download the applicable warranties.

Installation

For glue-down installations of all GroundFloor™ products, the subfloor surface must be properly prepared and free of moisture, dirt, oils, and other foreign materials to ensure a reliable bond with the adhesive. For detailed installation instructions for each product line visit www.StaticStop.com to view and download applicable documents.

Regular Maintenance

GroundFloor™ ESD Products are easy to maintain. Like all vinyl ESD floor products, a regular maintenance program is required to maintain the aesthetics and ESD performance. Polyurethane finishes on both the “Plus” and the “Designer Series” products ensure exceptional ease of maintenance. For detailed maintenance instructions for each product line visit www.StaticStop.com to view and download applicable documents.

Architectural Specifications

All floors shown in the Finish Schedule or listed in this specification shall be **GroundFloor™ ESD Resilient Flooring**, manufactured by SelecTech, Inc. Avon, MA. The product should have an electrical resistance of between 2.5×10^4 and 10^6 Ohms for conductive flooring applications and 10^6 to 10^9 Ohms for static dissipative applications as measured pursuant to ANSI/ESD 7.1. This product shall offer a lifetime electrical and 10-year limited wear warranty as detailed in the **GroundFloor™ ESD Warranty** brochure. Installation shall be as recommended in the **GroundFloor™ ESD Installation Guide**.

Chemical Resistance

GroundFloor™ ESD has been tested for solvent/stain resistance per ASTM F-925-96 against a number of fluids, such as oils, acids, solvents, and staining agents.

GroundFloor™ ESD Comparison Chart

	Classic	PLUS	Designer Series	EPA Tile
Physical Properties				
Format	Tile	Tile	Roll	Tile
Thickness	2 mm, 3 mm	2mm	2mm	2 mm
Size	18.5" x 18.5"	18.5" x 18.5"	2m x 20m	18.5" x 18.5"
Weight	1.6 lbs	1.4lbs	500 lbs/roll	1.4lbs
Reference Specification ASTM E-648	Conforms	Conforms	Conforms	Conforms
Critical Radiant Flux ASTM E-648	Class 1 Fire Rating	Class 1 Fire Rating	Class 1 Fire Rating	Class 1 Fire Rating
Smoke Density ASTM E-662	<450	<450	<450	<450
Electrical Properties				
Resistance, Ohm per ESD STM S7.1	2.5×10^4 to $<1.0 \times 10^6$	2.5×10^4 to $<1.0 \times 10^6$	2.5×10^4 to $<1.0 \times 10^6$	1.0×10^6 to $<1.0 \times 10^9$
Walking Voltage, Volts per ESD STM 97.2	<50 volts	<50 volts	<50 volts	<100 volts

Walking voltage results based on third-party certified laboratory testing. Results will vary depending on site conditions and footwear used. No ESD floor product will perform as designed without appropriate conductive footwear.